

UNIT, DIRECT SUPPORT, AND GENERAL SUPPORT MAINTENANCE
REPAIR PARTS AND SPECIAL TOOLS LIST
TRUCK, 5-TON, 6X6, M809 SERIES TRUCKS (DIESEL)

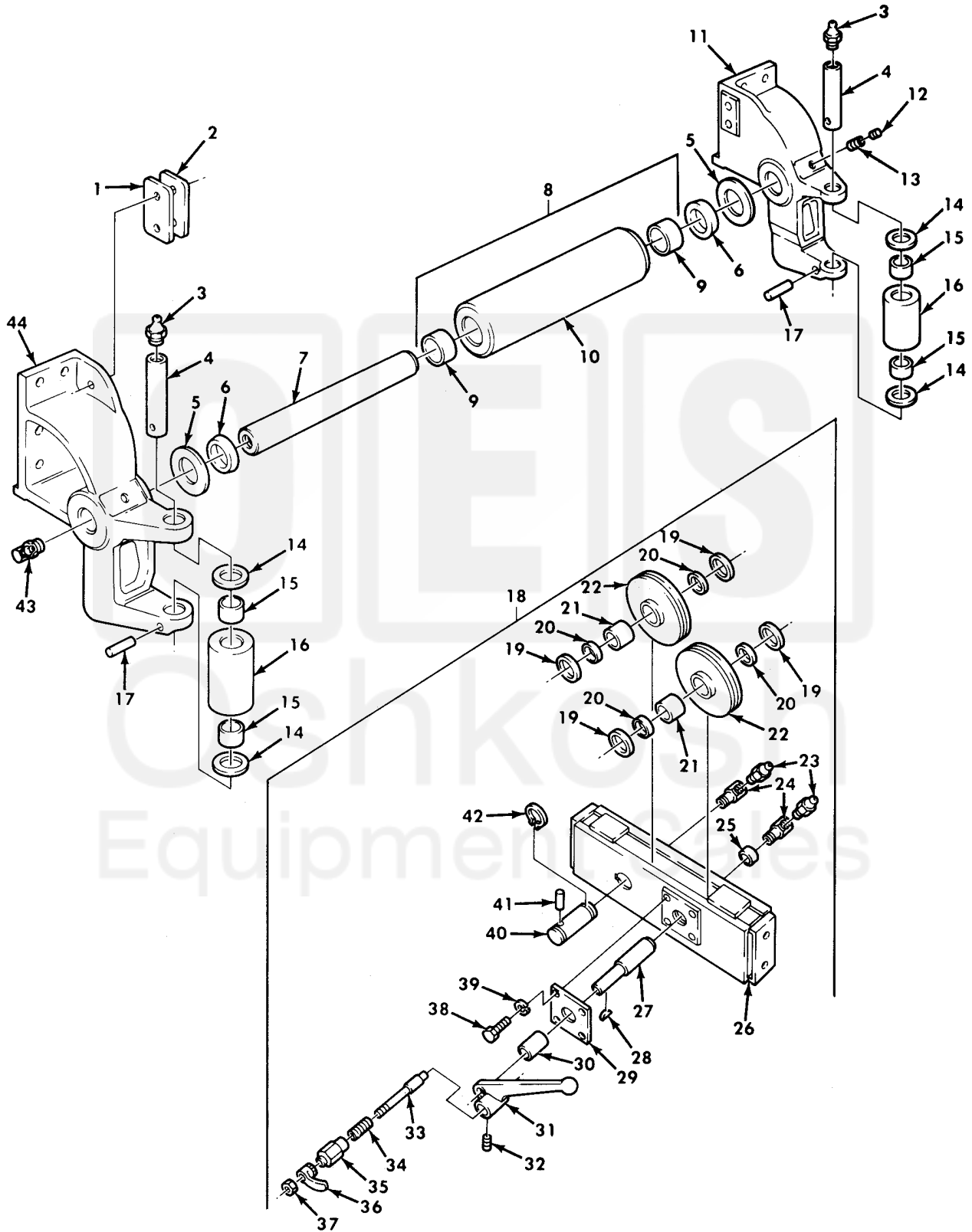


Figure 365. Front Winch Tensioner Assembly, Roller Assembly, and Related Parts.

(1) ITEM NO	(2) SMR CODE	(3) NSN	(4) CAGEC	(5) PART NUMBER	(6) DESCRIPTION AND USABLE ON CODE (UOC)	(7) QTY
GROUP 2001 HOIST, CRANE, OR WINCH ASSEMBLY						
FIG. 365 FRONT WINCH TENSIONER ASSEMBLY, ROLLER ASSEMBLY, AND RELATED PARTS						
1	PAFZZ	5365-01-106-4286	19207	7411162	SPACER, PLATE	1
					UOC: 620, 622	
2	PAFZZ	5365-01-106-4282	19207	8344247	SHIM	1
					UOC: 620, 622	
3	PAOZZ	4730-00-050-4208	96906	MS15003-1	FITTING, LUBRICATION	2
					UOC: 614, 620, 621, 622, 623, 625, 628, 633, 634, 637	
4	PAFZZ	5315-00-740-9609	19207	7409609	PIN/ROLLER WINCH	2
					UOC: 614, 620, 621, 622, 623, 625, 628, 633, 634, 637	
5	PAFZZ	3120-00-740-9729	19207	7409729	BEARING, WASHER, THRU	2
					UOC: 614, 620, 621, 622, 623, 625, 628, 633, 634, 637	
6	PAHZZ	5330-00-741-7094	19207	7417094	PACKING ASSEMBLY	2
					UOC: 614, 620, 621, 622, 623, 625, 628, 633, 634, 637	
7	PAFZZ	3040-00-740-9725	19207	7409725	SHAFT, SHOULDERED	1
					UOC: 614, 620, 621, 622, 623, 625, 628, 633, 634, 637	
8	PAFFF	2520-00-740-9694	19207	7409694	ROLLER ASSEMBLY, WIN	1
					UOC: 614, 620, 621, 622, 623, 625, 628, 633, 634, 637	
9	PAFZZ	3110-00-227-3249	96906	MS51961-22	. BEARING, ROLLER, NEED	2
					UOC: 614, 620, 621, 622, 623, 625, 628, 633, 634, 637	
10	PAFZZ	3990-01-083-5407	19207	7954470	. ROLLER ASSEMBLY	1
					UOC: 614, 620, 621, 622, 623, 625, 628, 633, 634, 637	
11	PAFZZ	5340-01-278-2190	19207	7409804-1	BRACKET, MOUNTING	1
					UOC: 614, 620, 621, 622, 623, 625, 628, 633, 634, 637	
12	PAFZZ	5305-00-725-0168	96906	MS51963-137	SETSCREW	1
					UOC: 614, 620, 621, 622, 623, 625, 628, 633, 634, 637	
13	PAFZZ	5305-00-939-0576	96906	MS51977-84	SETSCREW	1
					UOC: 614, 620, 621, 622, 623, 625, 628, 633, 634, 637	
14	PAFZZ	5310-00-740-9728	19207	7409728	WASHER, FLAT	4
					UOC: 614, 620, 621, 622, 623, 625, 628, 633, 634, 637	
15	PAFZZ	3120-00-740-9807	19207	7409807	BEARING, SLEEVE	4
					UOC: 614, 620, 621, 622, 623, 625, 628, 633, 634, 637	
16	PAFZZ	3120-00-740-9695	19207	7409695	BEARING, SLEEVE	2
					UOC: 614, 620, 621, 622, 623, 625, 628, 633, 634, 637	
17	PAFZZ	5315-00-014-2972	96906	MS35671-42	PIN, GROOVED, HEADLES	2
					UOC: 614, 620, 621, 622, 623, 625, 628, 633, 634, 637	
18	PAFFF	2530-00-998-4711	19207	8690884	TENSION DEVICE, TRAC	1
					UOC: 620, 622	
19	PAFZZ	3120-00-741-1170	19207	7411170	. BEARING, WASHER, THRU	4
					UOC: 620, 622	
20	PAFZZ	5330-00-741-7093	19207	7417093	. PACKING ASSEMBLY	4
					UOC: 620, 622	
21	PAFZZ	3110-00-227-3241	96906	MS51961-9	. BEARING, ROLLER, NEED	2

(1) ITEM NO	(2) SMR CODE	(3) NSN	(4) CAGEC	(5) PART NUMBER	(6) DESCRIPTION AND USABLE ON CODE (UOC)	(7) QTY
22	PAFZZ	3020-00-484-5831	19207	8344250	UOC: 620, 622 . PULLEY, GROOVE	2
23	PAFZZ	4730-00-172-0034	96906	MS15003-6	UOC: 620, 622 . FITTING, LUBRICATION	2
24	PAFZZ	4730-00-278-4814	57733	44701	UOC: 620, 622 . ELBOW, PIPE	2
25	PAFZZ	3120-00-741-1164	19207	7411164	UOC: 620, 622 . BEARING, SLEEVE	1
26	PAFZZ	3040-00-179-3540	19207	8344248	UOC: 620, 622 . FRAME, TENSIONER, WIN	1
27	PAFZZ	3040-00-417-2756	19207	7994965	UOC: 620, 622 . CAM, CONTROL	1
28	PAFZZ	5315-00-616-5519	96906	MS35756-1	UOC: 620, 622 . KEY, WOODRUFF	1
29	PAFZZ	3130-01-085-3595	19207	8344506	UOC: 620, 622 . BLOCK ASSEMBLY, BEAR	1
30	PAFZZ	3120-00-661-9026	19207	7411163	UOC: 620, 622 . BEARING, SLEEVE	1
31	PAFZZ	2590-00-234-3262	19207	8344251	UOC: 620, 622 . LEVER, MANUAL CONTRO	1
32	PAFZZ	5305-00-724-5898	96906	MS51963-83	UOC: 620, 622 . SETSCREW	1
33	PAFZZ	2520-00-741-1166	19207	7411166	UOC: 620, 622 . POPPET WINCH TROLLE	1
34	PAFZZ	5360-00-753-8706	19207	7538706	UOC: 620, 622 . SPRING, HELICAL, COMP	1
35	PAFZZ	2590-00-226-2347	19207	8344240	UOC: 620, 622 . NUT, WINCH POPPET	1
36	PAFZZ	2540-00-740-9150	19207	7409150	UOC: 620, 622 . LATCH, DRUM LOCK	1
37	PAFZZ	5310-00-891-1709	96906	MS35691-9	UOC: 620, 622 . NUT, PLAIN, HEXAGON	1
38	PAFZZ	5305-00-269-3234	80204	B1821BH038F075N	UOC: 620, 622 . SCREW, CAP, HEXAGON H	4
39	PAFZZ	5310-00-637-9541	96906	MS35338-46	UOC: 620, 622 . WASHER, LOCK	4
40	PAFZZ	3040-00-741-1161	19207	7411161	UOC: 620, 622 . SHAFT, STRAIGHT WINCH TENSIONER FRAME	1
41	PAFZZ	5315-00-731-9230	19200	12279479	UOC: 620, 622 . PIN, STRAIGHT, HEADLE	1
42	PAFZZ	5325-00-530-7968	96906	MS16624-1100	UOC: 620, 622 . RING, RETAINING STRAIGHT SHAFT	1
43	PAFZZ	4730-00-172-0034	96906	MS15003-6	UOC: 620, 622 FITTING, LUBRICATION	2
44	PAHZZ	2520-00-740-9805	19207	7409805-1	UOC: 614, 620, 621, 622, 623, 625, 628, 633, 634, 637 BRACKET ROLLER	1

END OF FIGURE